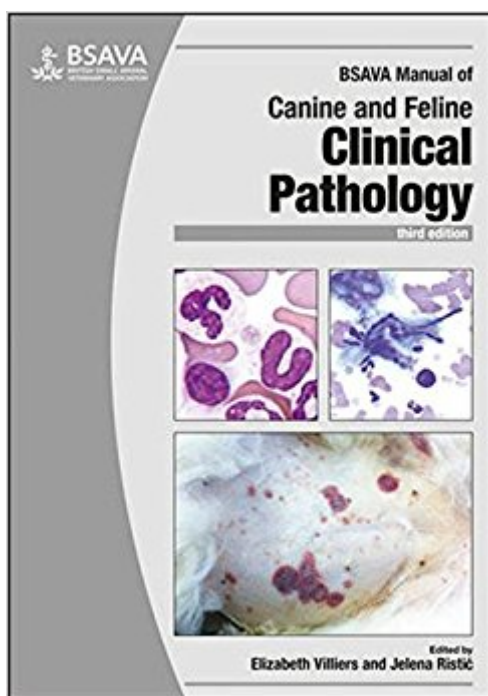


The book was found

# BSAVA Manual Of Canine And Feline Clinical Pathology (BSAVA British Small Animal Veterinary Association)



## Synopsis

The new edition of this popular manual has been extensively updated to reflect advances in this field, while readers will also find new chapters on inherited and cardiac disease. Clinical case studies have been retained, allowing readers to consider how they might approach common problems and see for themselves how test selection and interpretation are applied. Body systems are dealt with in their own discrete chapters, as are urinalysis, blood cells and proteins. Full-colour photographs and illustrations can be found throughout, which will prove indispensable to clinical pathologists, clinicians and veterinary students keen to get grips with a rapidly expanding subject.

## Book Information

Series: BSAVA British Small Animal Veterinary Association

Paperback: 624 pages

Publisher: BSAVA; 3 edition (July 5, 2016)

Language: English

ISBN-10: 1905319630

ISBN-13: 978-1905319633

Product Dimensions: 8.1 x 1 x 11.7 inches

Shipping Weight: 3.9 pounds (View shipping rates and policies)

Average Customer Review: Be the first to review this item

Best Sellers Rank: #983,421 in Books (See Top 100 in Books) #20 in [Books > Medical Books > Veterinary Medicine > Pathology](#) #181 in [Books > Textbooks > Medicine & Health Sciences > Veterinary Medicine > Small Animal](#) #331 in [Books > Medical Books > Veterinary Medicine > Small Animal Medicine](#)

## Customer Reviews

This new edition of a must-have manual, edited by Elizabeth Villiers, Jelena Ristic and Laura Blackwood, features new case studies and updated images. There is an increased focus on principles, testing and interpreting results as well as sampling, genetic testing and diagnosing genetic and inherited diseases. Fully revised and expanded, this manual contains not just advice for the busy practitioner, but also for the concerned owner and how they can play a part in the treatment of their pet.

Elizabeth Villiers BVSc FRCPath DipECVCP CertSAM Cert VR MRCVSEuropean Specialist in Veterinary Clinical Pathology Fellow of the Royal College of Pathologists Head of Dick White

Referrals Diagnostics Clinical Pathology Laboratory, UK Jelena Ristic BVetMed DSAM CertVC  
MRCVSAxiom Veterinary Laboratories, UK

[Download to continue reading...](#)

BSAVA Manual of Canine and Feline Clinical Pathology (BSAVA British Small Animal Veterinary Association) BSAVA Manual of Canine and Feline Wound Management and Reconstruction (BSAVA British Small Animal Veterinary Association) BSAVA Manual of Canine and Feline Oncology (BSAVA British Small Animal Veterinary Association) BSAVA Manual of Canine and Feline Musculoskeletal Imaging (BSAVA British Small Animal Veterinary Association) BSAVA Manual of Canine and Feline Abdominal Surgery (BSAVA British Small Animal Veterinary Association) BSAVA Manual of Small Animal Dentistry (BSAVA British Small Animal Veterinary Association) BSAVA Small Animal Formulary (BSAVA British Small Animal Veterinary Association) BSAVA Textbook of Veterinary Nursing (BSAVA British Small Animal Veterinary Association) BSAVA Manual of Exotic Pets (BSAVA British Small Animal Veterinary Association) Manual of Small Animal Dentistry (BSAVA British Small Animal Veterinary Association) Manual of Small Animal Dermatology (BSAVA British Small Animal Veterinary Association) BSAVA Manual of Canine and Feline Clinical Pathology BSAVA Manual of Canine and Feline Advanced Veterinary Nursing BSAVA Manual of Canine and Feline Nephrology and Urology BSAVA Manual of Canine and Feline Reproduction and Neonatology BSAVA Manual of Canine and Feline Dentistry BSAVA Manual of Canine and Feline Gastroenterology BSAVA Manual of Canine and Feline Oncology BSAVA Manual of Canine and Feline Musculoskeletal Imaging BSAVA Manual of Canine and Feline Thoracic Imaging

[Contact Us](#)

[DMCA](#)

[Privacy](#)

[FAQ & Help](#)